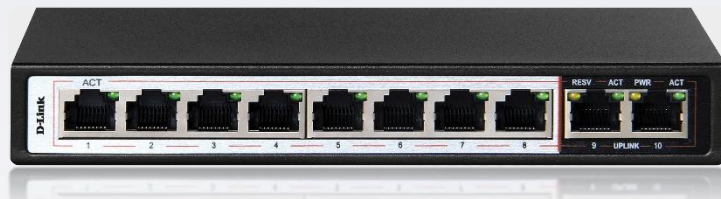


Product Highlights

- Support power over Ethernet cable device for example wireless AP and IP camera
- Support IEEE802.3af/at standard
- Transmission distance 250m, it can be flexible installation for wireless AP and surveillance project.
- It will give the speed of 10Mbps at 250meter when connect IP cameras



DES-F1010P-E

8FE PoE + 2GE Uplink, 120Watt ,250m PoE Switch

Features

- Support upward port auto MDI/MDIX.
- Adopted storage forward switch system
- Smart power and minimum consumption guarantee PD requirement.
- With power supply circuit protection function and protection back-end device safety
- Automatically provide the adaptive device
- Fanless design, energy saving and environmental protection;
- 8 10/100 Mbps POE port
- 2 10/100/1000 Mbps uplink port
- Support saving power function when port connection

DES-F1010P-E is 10 port FE with 8 PoE port switch that offers 8 10/100 Mbps PoE ports, 2 10/100/1000 Mbps uplink ports, auto detection and identification IEEE802.3af/at standard PD device, then carry power to it. Therefore, do not worry it will destroy the private standard PoE or Non-PoE equipment.

DES-F1010P-E is the best choice for mini type commercial network because it economically uses PoE deployment wireless AP and IP camera. It can resolve the problem of maintenance tedious, wireless coverage, terminal device powered, surveillance project, Maximum save the cost.

Technical Specifications	
Network Interface	8 10/100 Mbps PoE RJ45 port (port 1 ~port 8) 2 10/100/1000 Mbps non-PoE RJ45 port (port 9~port 10)
Transmission Rate	·10/100 Mbps Each port supports MDI / MDIX auto-flip and auto- ·Network interface:10BASE-T or 100BASE-TX Ethernet RJ-45 port
Protocols and Standards	·IEEE802.3i 10BASE-T ·IEEE 802.3u 100BASE-TX ·IEEE 802.3ab 1000BASE-T ·ANSI/IEEE 802.3 NWay auto-negotiation ·IEEE802.3x Flow Control ·IEEE 802.3af/at standard
Performance	·Bandwidth: 2 Gbps (no block) ·Network delay (100 to 100M bps): maximum 20 μs (using 64byte packet) ·Frame filtering and transmission rate ·10M: 14,800pps ·100M: 148,800pps
LEDs Indicator	· Power · LINK/ACT, POE
POE Pin	·1/2(+) 3/6(-);
Power	·Total Power: 120W
Lightning protection	6KV
Physical specifications	·Dimensions (LxWxH): 184 x 94 x 27mm ·Weight: 1.05kg
Environmental norms	Operating Temperature: 0°C~40°C Storage Temperature: -10°C~70°C Operating Humidity: 10%~90% non-condensing Storage Humidity: 5%~90% non-condensing

Switch Working mode

Using DIP switch control working mode, details description as below:

1. VLAN: Isolating ports 1-8 from each other, restrain network storms effectively and improve network performance.
2. EXTEND: 1-8 port supports 250M meters long distance power supply (recommended cat 5 or above)
3. PoE: Automatic detection power of port, power off and restart the device if find dead machine.
4. QoS: Customize application prioritization and increase network sensitivity. For example, video priority, monitoring transmission more smoothly

Ordering Information	
Part Code	Description
DES-F1010P-E	8 + 2 1000Mbps 250m PoE Switch