



# DAHUA CLOUD MANAGED SWITCHES

Facilitate Networking, All in One Stop



Quick  
Deployment



Hassle-free  
Configuration



Efficient  
Maintenance

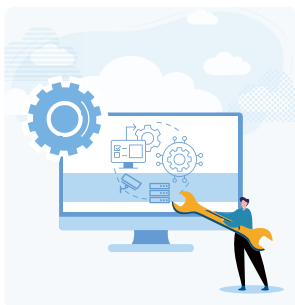


**PoE  
2.0** PoE 2.0  
Features

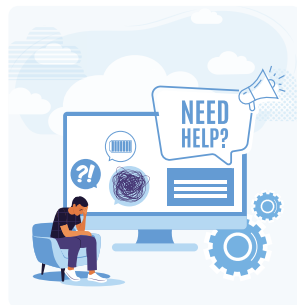
## Overview

The Dahua Cloud Managed Switches allow you to add your devices by scanning the QR code and manage them using an integrated platform (mobile or WEB) via the cloud. The auto-generated network topology and rich management features enables an easy configuration and maintenance. A full set of PoE 2.0 functions is also provided, making it suitable for both surveillance and IT networking.

## Challenges



Troublesome deployment and heavy toolbox



Complex web configuration and command line interface



Hard to monitor the networking status in real-time



High cost of locating and fixing the problems

## Highlights



### Quick Deployment

Deploy your devices and illustrate the corresponding topology on the app/web interface.



- **Easy to add devices:** Only requires one step (scan the QR code) to add your devices to your system.
- **Topology auto-generation:** DoLynk Care automatically identifies connected products and generates relevant topology.
- **Unified platform:** Remotely operate via web or app platforms, bringing convenience to conventional operation procedure.

## DAHUA CLOUD MANAGED SWITCHES

Facilitate Networking, All in One Stop



### Hassle-free Configuration

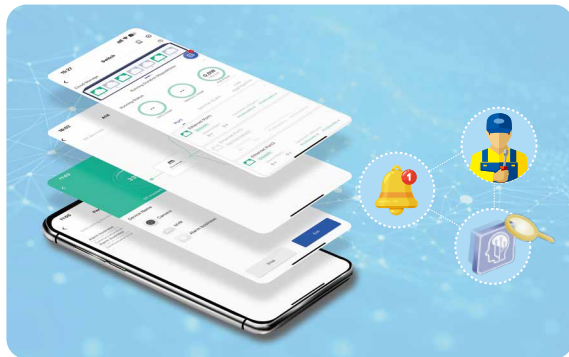
Configure the connected devices remotely. No need to go to the site anymore.

- **Remote configuration:** Supports various configuration functions for added devices, such as reboot, upgrade, back up, restore and more.
- **Abundant management features:** Supports multiple management functions, including STP, VLAN, Link Aggregation, Loop Protection, etc.
- **One-stop configuration:** Quick redirection to the settings menu of the connected device.



### Efficient Maintenance

Maintenance through topology, data dashboard, real-time alarm and health diagnosis provides trouble-free services for your devices.



- **Topology management:** Remotely modify the configuration based on the graphical topology, and conveniently access the IPC live view.
- **Data Dashboard:** The graphical data display the real-time status of connected devices.
- **Real-time alarm:** When an error occurs, the operator will be informed immediately.
- **One-click health diagnosis:** One click to check all devices and provide professional guidance for troubleshooting.
- **Entrust Service:** Entrust your system to an operator to have your system maintained in good hand.



### PoE 2.0 Features

PoE 2.0 features Red Port 90W power supply, PoE Watchdog, long distance PoE, and more.

- **PoE Watchdog:** It enables the switch to automatically detect port status and restart the faulty camera to recover connection.
- **Red Port 90W:** The red port is in compliance with the latest international standard IEEE 802.3bt and can provide 90W PoE output.
- **Long Distance PoE:** The switch can deliver a 250-meter long distance transmission, breaking the common 100m limitation.



## DAHUA CLOUD MANAGED SWITCHES

Facilitate Networking, All in One Stop

### Topology

The DoLynk Care cloud platform is a professional and reliable platform where you can manage your customers' sites anytime, anywhere. When a device fails, you will receive a push notification immediately, allowing you to locate the issue and solve it remotely.



### Recommended Products



DH-CS4006-4ET-60  
DH-CS4006-4GT-60



DH-CS4010-8ET-110  
DH-CS4010-8GT-110



DH-CS4218-16ET-135/190/240  
DH-CS4218-16GT-135/190/240



DH-CS4226-24ET-240/375  
DH-CS4226-24GT-240/375

\*Design and specifications are subject to change without notice.

Ver. 4, Aug. 2023

## DAHUA TECHNOLOGY

Add: No.1399 Binxing Road, Binjiang District, Hangzhou, China. 310053  
Email: overseas@dahuatech.com  
Website: www.dahuasecurity.com



DoLynk Care



Website