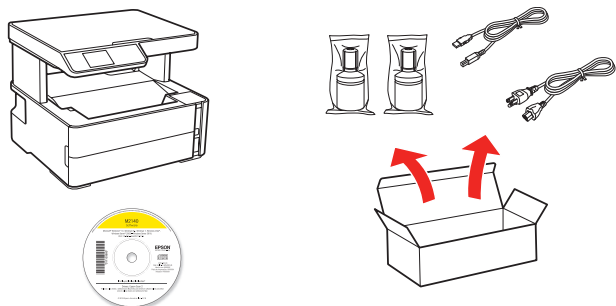


# M2140 Start Here

**IMPORTANT:** Before using this product, make sure you read these instructions and the safety instructions in the online *User's Guide*.

## 1 Unpack

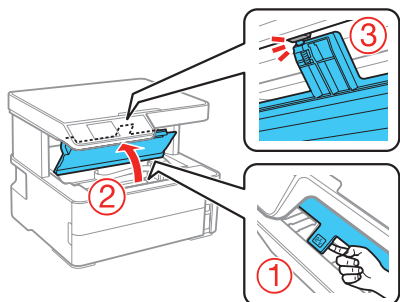


Make sure you keep the box shown above for use when transporting the printer.

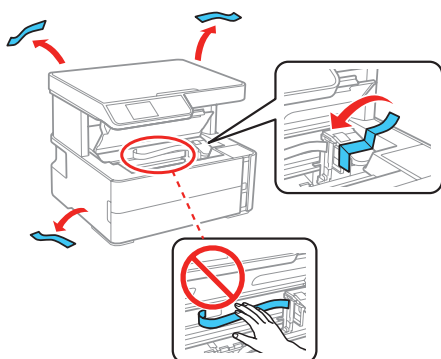
**Caution:** Do not lift the product by gripping the scanner unit. Make sure you lift using the handholds on the bottom of the product.

**Note:** Do not open either of the ink bottles until you are ready to fill the ink tank. The ink bottles are vacuum packed to maintain reliability.

1 Lift up the printer cover until it clicks into place.



2 Remove all protective materials from the product.



**Caution:** Do not touch the flat white cable, translucent film, or the ink tubes.

3 Close the printer cover.

**Note:** Do not turn on the product yet.



\*41366500\*

**EPSON**  
EXCEED YOUR VISION

## 2 Fill ink tank and charge the ink

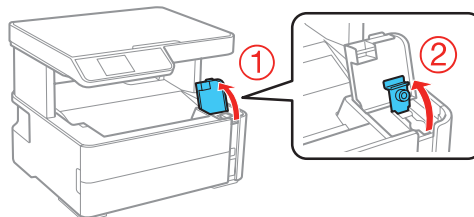
**Warning:** Keep the ink bottles out of the reach of children and do not drink the ink.

**Caution:** This product requires careful handling of ink. If ink spills, wipe it off immediately with a damp towel to avoid permanent stains. If ink gets on your clothes or belongings, it may not come off.

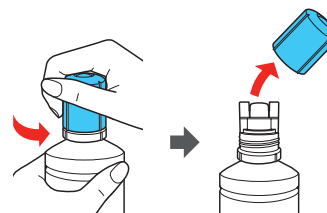
**Note:**

- Epson cannot guarantee the quality or reliability of third-party ink.
- Use one of the ink bottles included with the printer to set up the product. Part of the ink will be used to charge the print head. This bottle may print fewer pages compared with subsequent ink bottles.

1 Open the ink tank cover, then open the cap.

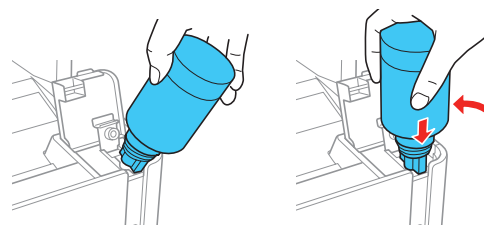


2 Unpack one of the ink bottles. Hold the ink bottle upright and slowly turn the bottle cap to remove it.



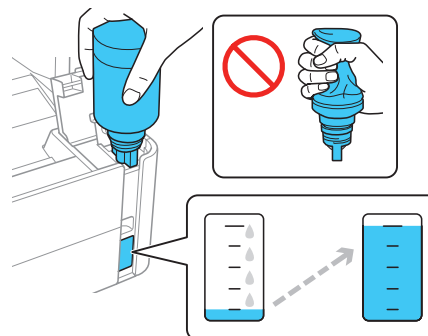
**Caution:** Do not shake or squeeze the ink bottle. Do not touch the top of the ink bottle after its cap is removed.

3 Insert the ink bottle into the filling port, as shown below.



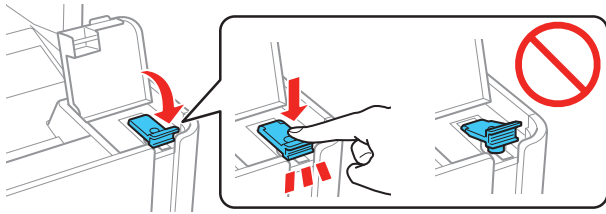
**Note:** Do not force the bottle into position.

4 Wait for the ink to fill the tank. **Do not squeeze the bottle.**



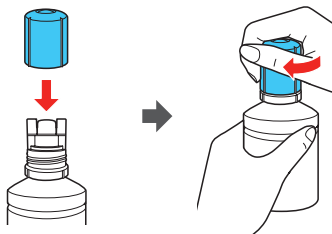
**Note:** If ink does not flow from the bottle, lift and reinsert the bottle.

- 5** When the ink tank is full, remove the ink bottle and securely close the ink tank cap.

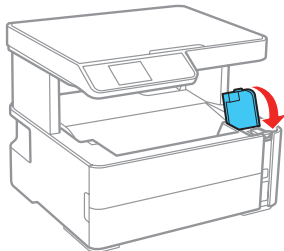


**Note:** Do not leave the ink bottle inserted; otherwise the bottle may be damaged or ink may leak.

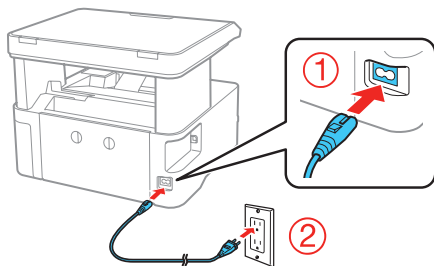
- 6** Securely close the ink bottle with the bottle cap.





- 7** Close the ink tank cover.

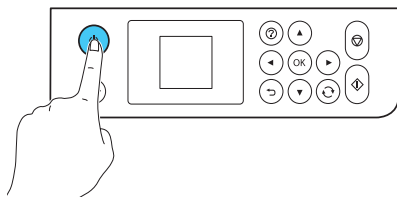


- 8** Connect the power cord to the back of the product and to an electrical outlet.





**Caution:** Do not connect to your computer yet.

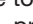
- 9** Press the  power button to turn on the product, then wait for the  power light to stop flashing.

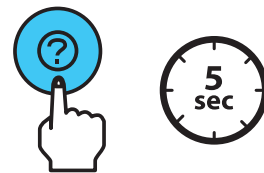



**Note:** If an error code appears, turn off the product and check that no protective material has been left inside the product.

- 10** Press  or  to select your language on the LCD screen, then press the **OK** button.

**Note:** You can change this setting later using the product's control panel. For more information, see the online *User's Guide*.

- 11** When the message to see the *Start Here* sheet appears on the LCD screen, press and hold the  help button for 5 seconds.



- 12** When the ink confirmation message appears on the LCD screen, press the  start button to start charging the ink. Ink charging takes approximately 10 minutes. A message appears when ink charging is complete. Press the **OK** button to continue.

**Caution:** Do not turn off the product, raise the printer cover, or load paper while the product is charging or you'll waste ink.



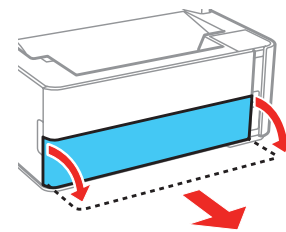
**Note:** After some ink is used for charging, the rest is available for printing.

- 13** Follow the on-screen instructions to adjust the print quality. Press the **OK** button to continue.

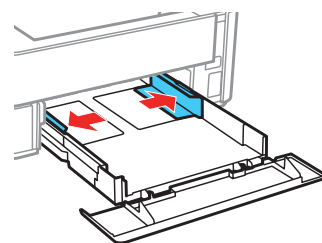
## 3 Load paper

See the online *User's Guide* for information about loading capacity and available paper types and sizes.

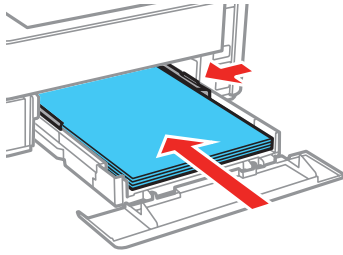
- 1** Make sure the product is done charging the ink. Open the paper cassette cover and pull out the paper cassette until it stops.



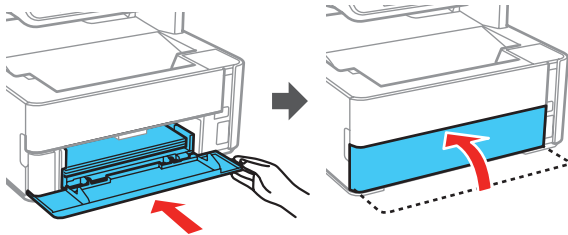
- 2** Slide the edge guides all the way out.



- 3 Insert paper with the glossy or printable side down and slide the edge guides against the paper, but not too tightly.



- 4 Keep the cassette flat as you insert it all the way and then close the paper cassette cover.



**Note:** Make sure the paper is loaded against the front of the cassette.

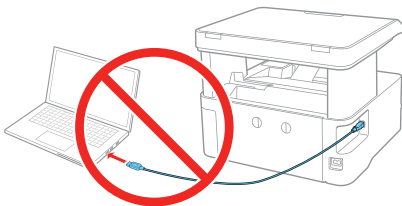
- 5 Select the paper settings on the product's control panel.

For instructions on loading envelopes or legal-size paper, or using the rear paper feed slot, see the online *User's Guide*.

## 4 Install software

**Note:** If your computer does not have a CD/DVD drive or you are using a Mac, an Internet connection is required to obtain the product software.

- 1 Make sure the product is **NOT CONNECTED** to your computer.



**Windows®:** If you see a Found New Hardware screen, click **Cancel** and disconnect the USB cable.

- 2 Insert the product CD (Windows only) or download and run your product's software package. For the latest software, visit:

[www.epson.com.jm/support/M2140](http://www.epson.com.jm/support/M2140)

- 3 Follow the instructions on the computer screen to run the setup program.

## Any problems?

### There are lines or incorrect colors in my printouts.

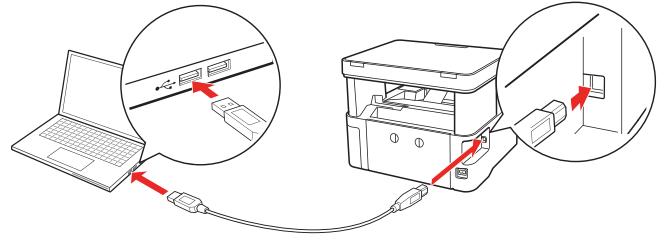
Run a nozzle check to see if there are any clogged nozzles. Then clean the print head, if necessary. See the online *User's Guide* for more information.

### The product's screen is dark.

Make sure your product is turned on, and press any button to wake it from sleep mode.

### Setup is unable to find my product after connecting it with a USB cable.

Make sure your product is on and securely connected as shown.



### Error codes

If you see one of the error codes below on the LCD screen, follow the steps here to proceed:

E-01	A printer error has occurred. Open the printer cover and remove any paper or protective material inside the printer. Turn the power off and on again.
E-02	A scanner error has occurred. Turn the power off and on again.
W-01	A paper jam has occurred. Remove the paper from the printer and press the button displayed on the bottom of the LCD screen to clear the error. In some cases, you need to turn the power off and on again.

## Any questions?

### User's Guide

**Windows:** Click the icon on your desktop or Apps screen to access the online *User's Guide*.

**Mac:** Click the icon in Applications/Epson Software/Guide to access the online *User's Guide*.

If you don't have a User's Guide icon, go to the Epson website, as described to the right.

## Technical support

Visit [www.epson.com.jm/support/M2140](http://www.epson.com.jm/support/M2140) to download drivers, view manuals, get FAQs, or contact Epson.

You can also speak to a service technician by calling one of these numbers:

<b>Argentina</b>	(54 11) 5167-0300	<b>Guatemala*</b>	1-800-835-0358
	0800-288-37766	<b>Mexico</b>	01-800-087-1080
<b>Bolivia*</b>	800-100-116	<b>Mexico City</b>	(52 55) 1323-2052
<b>Chile</b>	(56 2) 2484-3400	<b>Nicaragua*</b>	00-1-800-226-0368
<b>Colombia</b>	018000-915235	<b>Panama*</b>	00-800-052-1376
<b>Bogota</b>	(57 1) 592-2200	<b>Paraguay</b>	009-800-521-0019
<b>Costa Rica</b>	800-377-6627	<b>Peru</b>	0800-10-126
<b>Dominican Republic*</b>	1-888-760-0068	<b>Lima</b>	(51 1) 418-0210
<b>Ecuador*</b>	1-800-000-044	<b>Uruguay</b>	00040-5210067
<b>El Salvador*</b>	800-6570	<b>Venezuela</b>	(58 212) 240-1111

\* Contact your local phone company to call this toll free number from a mobile phone.

If your country does not appear on the list, contact your nearest Epson sales office. Toll or long distance charges may apply.

## Need paper and ink?

Ensure peak performance and brilliant results with Genuine Epson® Ink and specialty papers, engineered specifically for Epson printers. You can purchase them from an Epson authorized reseller. To find the nearest one, visit [www.epson.com.jm](http://www.epson.com.jm) or contact Epson as described in “Any questions?” on this sheet.



DESIGNED *for*  
EXCELLENCE™

Epson printers, ink and specialty papers.

### M2140 replacement inks

Color	Standard-capacity	High-capacity
Black	534S	534



\* Ink availability varies by country.



EPSON is a registered trademark and EPSON Exceed Your Vision is a registered logomark of Seiko Epson Corporation.

Designed for Excellence is a trademark of Epson America, Inc.

Mac is a trademark of Apple Inc., registered in the U.S. and other countries.

Windows is a registered trademark of Microsoft Corporation in the United States and/or other countries.

General Notice: Other product names used herein are for identification purposes only and may be trademarks of their respective owners. Epson disclaims any and all rights in those marks.

This information is subject to change without notice.

© 2018 Epson America, Inc., 9/18